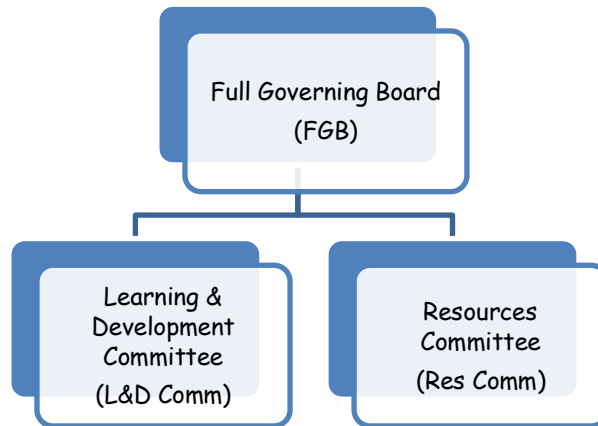


Pinewood School Academy Trust
Governing Board Structure, Roles and Responsibilities
(Last Updated: 28th February 2025)

Governance Model



Headteacher: Taney Howarth

Deputy HT: Todd Baines

Acting DHT: Kate Morrissey

Chair of Trustees: Robin Cregan

Vice Chair of Trustees: Paul Dunne

Members:

Paul Dunne, Sai Madabhushi, Alison Morgan & Robin Cregan

Full Governing Board (Trustees/Governors/Directors):

(Responsible for the strategic leadership, accountability & assurance, engagement)
Robin Cregan – Chair (Co-Opted), Paul Dunne (Co-Opted), Julie Stephenson (Parent), Nollie Cacciatore (Co-Opted), John Black (Parent), Enka Plaku (Parent), Tom Rontree-Carey (Parent).

Governance Professional Clerk (GPC): Shelley Chappell

Learning & Development Committee:

(Responsible to the FGB for the academic & pastoral provision of the school)
Julie Stephenson (Chair) Nollie Cacciatore (Vice-Chair), Taney Howarth, Robin Cregan, Enka Plaku

Resources Committee:

(Responsible to the FGB for the Financial, Audit, Personnel and Premises provision)
Paul Dunne (Chair), John Black (Vice-Chair), Taney Howarth, Robin Cregan, Tom Rontree-Carey, Alex Bailey (Acting CFO from HfL)