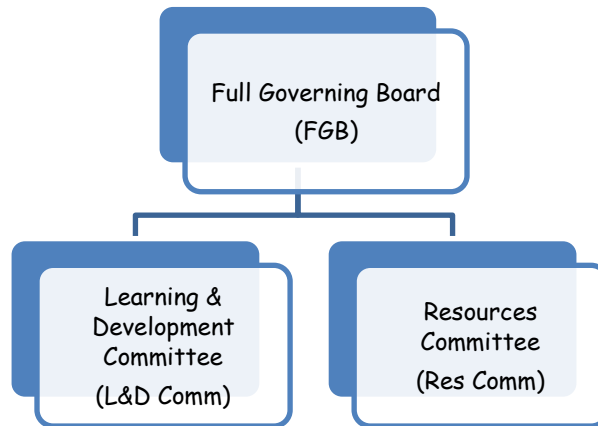


Pinewood School Academy Trust
Governing Board Structure, Roles and Responsibilities
(Last Updated: 20th April 2026)

Governance Model



Headteacher: Taney Howarth

Deputy HT: Kate Morrissey

Chair of Trustees: Robin Cregan

Vice Chair of Trustees: Paul Dunne

Members:

Paul Dunne, Sai Madabhushi, Alison Morgan & Robin Cregan

Full Governing Board (Trustees/Governors/Directors):

(Responsible for the strategic leadership, accountability & assurance, engagement)
Robin Cregan – Chair (Co-Opted), Paul Dunne (Co-Opted), Julie Stephenson (Parent), John Black (Parent), Enka Plaku (Parent), Tom Rontree-Carey (Parent), Vacancy (Co-Opted)

Governance Professional Clerk (GPC): Shelley Chappell

Learning & Development Committee:

(Responsible to the FGB for the academic & pastoral provision of the school)
Julie Stephenson (Chair), Enka Plaku (Vice-Chair), Taney Howarth, Robin Cregan, Vacancy

Resources Committee:

(Responsible to the FGB for the Financial, Audit, Personnel and Premises provision)
Paul Dunne (Chair), John Black (Vice-Chair), Taney Howarth, Robin Cregan, Tom Rontree-Carey, Jo Gray (SBM), Alex Bailey (Acting CFO from HfL)